

## **SurgeFTP Help Index**

- [FAQ](#)
- [FAQ - FTP SSL](#)
- [Updates / Change History](#)
- [Installation/Upgrade / Uninstall](#)
- [NetWin SurgeFTP WebSite](#)

### **How- to:**

- [Setting Up Multi-Domain Server](#)
- [Setting Up Authentication Modules](#)

### **Info - Gui Settings**

- [Global Settings](#)
- [Domain Settings](#)
- [Class Settings](#)
- [Directory Aliases](#)
- [Mirrors](#)
- [status](#)
- [report](#)
- [log](#)
- [Authent modules, ldap radius etc...](#)

[Back to your server](#)

## FTP SSL/TLS Frequently Asked Questions

- [Where do I get a domain name from?](#)
- [What is SSL/TLS?](#)
- [Does my version of SurgeFTP support SSL/TLS ?](#)
- [How to generate a Certification Authority Request to get a CA signed key](#)
- [What FTP client can I use with SSL/TLS](#)

### Where do I get a domain name from?

[\\$8.75 Cheap Domain Registration](#) - Register your domain names for only \$8.75, transfer them for only \$7.75! Free parking, free URL forwarding, free domain name generator software, and more.

### What is SSL/TLS and how secure is it?

SSL/TLS is the same kind of encryption system used by 'https' web pages.

It is generally considered to be the most (if not only) secure method for sending sensitive information across the internet, and is the basis of all ECommerce security systems used today.

When you use SurgeFTP with our SSLFTP client, the control and data connections are fully encrypted so no one can spy on the data or your commands or your password, as is possible with all non encrypted FTP sessions.

It comprises a set of three protocols, TLSv1, SSLv2 and SSLv3. The oldest is SSLv2 and hardly used nowadays, TLSv1 is very similar to SSLv3 and only considered marginally better.

These protocols are all enabled in SurgeFTP and SSLFTP, when a connection is opened in SSL mode, the underlying SSL chooses the best protocol. The three protocols are referred to as "SSL/TLS" or simply "ssl", which stands for "Secure Socket Layer"

### Does my version of SurgeFTP support SSL/TLS ?

Yes! All current and future versions of SurgeFTP support SSL/TLS

### How to generate a Certification Authority Request to get a CA signed

## key

SurgeFTP is distributed with a sample certificate. For high level security you should consider getting your own server certificate. This means that clients can be sure that they are talking to 'your' server and not just someone pretending to be your server.

A script is provided. Create a DOS/Shell window and run the script file and answer the questions

Windows:

```
cd ... \surgeftp
surgeftp_ca.cmd
```

Other:

```
cd ... /surgeftp
./surgeftp_ca.sh
```

Answer all the questions, and type in a pass phrase several times while generating the key.

This will create a file SERVER.NAME.csr

Paste request.pem into a CA registration form at a site that provides CA services, e.g. <http://www.verisign.com/>

<http://www.abaecom.com/>

<http://www.digisigtrust.com/>

<http://www.e-certify.com/>

<http://www.entrust.net/>

<http://www.equifax.com/>

<http://www.globalsign.com/>

<http://www.tc-trustcenter.com/>

<http://www.thawte.com/>

<http://www.valicert.com/>

SurgeFTP uses OpenSSL encryption / decryption libraries for SSL.

When they send you the actual key, save it as surge\_cert.pem in the main SurgeFTP directory. Also, copy the privkey.pem file into the same directory and call it surge\_priv.pem. e.g.

```
copy privkey.pem          surge_priv.pem
copy (signedkeyfromCA) surge_cert.pem
```

**Then restart surgeftp.**

Windows:

```
net stop SurgeFTP
net start SurgeFTP
```

Other:

```
/usr/local/surgeftp/surgeftp_stop.sh
/usr/local/surgeftp/surgeftp_start.sh
```

**What FTP client can I use with SSL/TLS**

SurgeFTP is distributed with SSLFTP, a simple command line client very similar to the standard UNIX/DOS 'FTP' client. e.g.

```
c:> sslftp my.server
Username: xxx
Password: yyy
sslftp> dir
sslftp> get important.dat
sslftp> quit
```

This same client is available for multiple platforms.

There are also many SSL gui clients now available, 'smartftp' is one good example, see <http://www.smartftp.com/>

After installing SurgeFTP the SSLFTP, install script is left in the main SurgeFTP directory, sslftp\_install.exe. You can distribute this to any systems that need to install the SSLFTP client, as it is a self extracting archive to install the command line utility.

There is no fee charged for the use of SSLFTP, it is freely distributable.

Please note: SSLFTP is only currently licensed for use with SurgeFTP servers, but it will work with any in a pinch. This means that we will fix any bug with SSLFTP if it cannot talk with SurgeFTP. We cannot guarantee that we can fix problems with it not talking to other FTP servers.

(Note2: sslftp.exe was originally called sftp.exe. It was re-named to avoid conflicts)

## Installation and Upgrading

### Windows

In order to install or upgrade, download the latest version from our FTP site and run it. It is a self extracting archive which will automatically detect your existing settings and upgrade or install as appropriate. See the download page <http://netwinsite.com/cgi-bin/keycgi.exe?cmd=download&product=surgeftp>

If you are already running an FTP server, it is essential that you stop it before starting SurgeFTP, as both will not run at once.

### Unix

In order to install or upgrade, download the latest version from our FTP site. Uncompress and untar the files, then run SurgeFTP with the `-install` qualifier, e.g. `linux install`:

```
wget ftp://ftp.netwinsite.com/pub/surgeftp/surgeftp2-2g_linuxlibc6.tar.Z
uncompress surgeftp2-2g_linuxlibc6.tar.Z
tar xvf surgeftp2-2g_linuxlibc6.tar
cd surgeftp2-2g_linuxlibc6
./install.sh
```

Use the same commands to upgrade your existing SurgeFTP server to a new version of `surgeftp`, upgrade is automatic and uses `/etc/surgeftp.ini`

On a first time installation, the standard UNIX FTP server will be stopped by commenting out the line in `/etc/inetd.conf` and sending HUP signal to that process.

To uninstall SurgeFTP on unix and restart the standard FTP server you just need to kill SurgeFTP, remove it from your `rc.local` start script and uncomment the FTP line in `/etc/inetd.conf` and `killall -HUP inetd`

If you ever need to manually start the server:

```
On NT, type in: net start SurgeFTP
On 95/98, type in: /windows/surgeftp
On Unix, /usr/local/surgeftp/surgeftp_start.sh
```

Now run the Web admin tool to configure your system further.

<http://127.0.0.1:7021>

## **UN-Installing:**

Upgrade to version 2.0c or later then type in

```
d:> SurgeFTP -uninstall
```

## Setting Up Multi-Domain Server

1) Go to your SurgeFTP GUI interface <http://127.0.0.1:7021/> and click on "Global" and then on a Domain (left hand side). If you are using only one IP for multiple domains, please look at [this page](#).

2) Add the domain name that you want to use by clicking on "Add Domain". Firstly enter the name of the domain e.g. "ftp.mysite.com". You should use the same spelling as the DNS entries for the IP address that the computer has, enter that IP address in the setting labled "Virtual Domain IP" and click on "Save".

When a FTP connection comes into the computer to the IP address, SurgeFTP will know what Domain the connection is wanting by matching the incomming connection to the "Virtual Domain IP" setting.

3) You will need to set up the User classes for the newly created domain so that users can login under this domain. Click on "Add Class of user", check either "Real" or "Anonymous". If you choose "Real" then this class is for the real users of this domain, their usernames and passwords are authenticated before they are given access to SurgeFTP.

You have to give the user at least a home directory, enter "/" for home, and "~" for Real Directory (without quotes). Below in the setting "Root path for users (~ translation uses this)" enter a directory path to the location of the where all of the users home directories. If you have a lot of users, choose a large hard disk :-). You could enter something like "c:\home". When User Bob successfully logs in he will have his files located at c:\home\bob\\*

If you are ever planning on having more than 1000 users in the user class, we recomend that you switch on the hashing for users home directories, enter "f/o/o/o" in the setting labled "Hashing of users home directory". It is important to not change this setting on an active FTP server, as all the users will not be able to log into their ftp directory.

Enter any other settings that you require for the class.

**4) Enter all the domains and IP numbers that you want SurgeFTP to respond to, by following these steps. You can also set up a local Domain with IP 127.0.0.1, which can only be reached from the local computer.**





# SurgeFTP Virtual Domains

## Product Links

[Download Now](#)

[FAQ](#)

[Email Support](#)

[Support Forum](#)

[Manual](#)

## Features

[SSL/TLS / Security](#)

[Performance / Threads](#)

[Easy management](#)

[Reports](#)

[Mirrors](#)

[NT Authentication](#)

[Authent Modules](#)

[Unlimited Virtual Domains](#)

[Daily download limits](#)

[Kbytes/second limits](#)

[Aliases](#)

[Remote Admin](#)

[Login notices](#)

[RFC Compliant](#)

[Directory notices](#)

[Version History](#)

**Setting up multiple Domains under one IP.  
One Computer, One IP, and several DNS names that point at that IP.**

## Internet Basics

This is very important to understand:

Information travels over the internet from one IP to another IP, not from one DNS name to another DNS name. That means, the DNS name associated with an IP is not sent during the initial connection establishment. All that is inherently known about an internet connection is the IP addresses of the computers at each end.

## DNS Names

DNS (Domain Name Service) is a way of associating a domain name with an IP address. This works by connecting to a DNS server and asking it what the IP address is for a particular DNS name, and it either responds with the correct IP for that name, or with an error message, most usually "unknown host" which happens if you mistype a domain name in a web browser.

The Domain Name Service is a network of computers on the internet that share the list of names and matching IP addresses, this is what all the ISP's register domains with on their users behalf when the user wants their domain. All these DNS computers are almost continuously propergating the information of new domains and old ones that are being deleted.

You might very well ask yourself "How does my computer connect to this service if I don't know the IP of my DNS Server?" The answer is that, when you connect to the internet, part of the connecting stage is where you receive the DNS IP that you are to use, your OS usually does the DNS lookup on a name and attempt the connection, when an application you run needs to make an internet connection.

## Configuring SurgeFTP correctly

You only really have one actual domain, so only create one domain in SurgeFTP, and one user class for each "virtual domain" that you want to host.

When aA FTP client opens a connection to the FTP server, all that the server can know about the connection is the IP of the client, and its own IP that accepted the connection, (for multi IP multi domain config this would be how FTP server determines the domain to be, however) at this point the FTP server has to identify itself, usually the Domain name is in the 220 hello string, but you will have to change this to be just an inspecific hello string, so that the user does not get confused about what they are connecting to. (Set Domin Setting "Greetings" to "FTP Server" or something else that is generic).

## Anonymous Users:

You can only ever have one anonymous class, there is no way to determine exactly which domain the anonymous user wants to login to. So best thing for anonymous class to have is a single /pub directory, and under that, have the domain name for each domain you are hosting, as a subfolder alias which maps into each of the virtual domains pub directory. (a /pub directory is the traditional location for publicly downloadable material)

e.g. Create or modify the Anonymous User Class:

Say you are hosting Three domains "a.com" "b.com" "c.com"

Their home directories look like this: (home dir, then location of web pages, then location of their /pub directory)

```
c:\home\a.com\
c:\home\a.com\puplic_html\
c:\home\a.com\pub\
c:\home\b.com\
c:\home\b.com\puplic_html\
c:\home\b.com\pub\
c:\home\c.com\
c:\home\c.com\puplic_html\
c:\home\c.com\pub\
```

The Anonymous user would have alias mappings like this:

Alias	Path
/	c:\home\anonymous
/pub	c:\home\anonymous\pub
/pub/a.com	c:\home\a.com\pub\
/pub/b.com	c:\home\b.com\pub\

/pub/c.com	c:\home\c.com\pub\
------------	--------------------

**Real Users:**

SurgeFTP (or any FTP server in this scenario) must be clever to be able to give the real users logging in the correct settings so that it will appear they are logging into the correct domain.

We need to wait for the user to identify themselves so that we know what domain they belong to. The user will send to the ftp server a username and a password, and this is where the user authentication plays a major part. The user authentication tells us if the login is valid, and it can tell us if the user belongs to any usergroups, and it can tell us where the users home directory is.

If the Authentication tells us what usergroup the user belongs to, we can use this to select a user class that has a matching usergroup. You can use groups like domains, if a user belongs to a particular group, then they belong to a particular domain. (Set User Class Setting "Specific usergroups in this class" to be a comma separated list of groupnames)

If the Authentication tells us what the users home directory is, SurgeFTP will use that for that user, and use the default user class. You may only require one real user class for this configuration.

If you want to be a little cunning, you can make your users login with the username to be user@domain, that way you can have a user class for each virtual domain, each having a username filter of "\*@domain" matching the name of the domain, and the user will be matched up to the user class. (Set User Class Setting "Specific users in this class" to the wildcard domain match.)

If you only have a few user logins, you can create a user class for each of them, and list the users names explicitly for each user class, which makes the user login under those class settings. (Set User Class Setting "Specific users in this class" to be exactly the users login name.)

## Real World Example with Problems and fixes:

You want to host a several Domains on one IP. Each Domain on the computer is a customers website. Plus you also want to host some of your home users local homepages. You have decided to use nauth as your authentication method.

You want to host these domains providing ftp access to a public\_html directory and a pub directory.

Domain	User Logins	Description
a.com	1	customers domain
b.com	1	customers domain
c.com	1	customers domain
local.isp.com	2592	Your ISP Domain where home users have their homepages.

In SurgeFTP GUI setup one "Domain" with four User Classes, then name them so you know which is which.



You then setup the logins in the NWAAuth database with usernames and groups settings so that you know what domain each login belongs to. Here is a table with the data you would want to put into NWAAuth.

The Groups setting uses an identifier to match up the userlogin to a "virtual domain" the identifying string can be anything as long as it matches the User Class setting called "Specific usergroups in this class".

User Login	Password	Groups
a.com	hdmfdg	a.com
b.com	oivaesf	b.com
c.com	oahfkfk	c.com
aaron	bcxmn	local
abbey	xdyn	local
bob	hgdbfg	local
ablogs	xhnd	local
gblogs	zsrqqc	local
peterp	rnhgfh	local
james	zergy	local
john	setdgh	local
...	...	...

To enter the data into the NWAAuth you could output the table data into a batch file in the format

```
nauth set $User $Password groups="$Groups"
```

(one line for each user)

In the GUI you need to set the Usergroups for each User Group to be one of the four user groups. Also you need to set the login home directories, for this setup I would recommend that you change the default mappings for the three domains (a.com, b.com, c.com) from the defaults:

Alias	Path
/	~

To (one for each matching domain):

Alias	Path
/	c:\domains\a.com

Alias	Path
/	c:\domains\b.com

Alias	Path
/	c:\domains\c.com

And set the local.isp.com aliases to this (the defaults)

Alias	Path
/	~

and set the setting "Root path for users (~ translation uses this)" to "c:\local\home"

This would mean that the local.isp.com user named "aaron" would login to the location "c:\local\home\aaron"

Once this is set correctly you can attempt to login. If you are unable to login use these steps to find the problem.

1. Check that the "groups" setting is called "groups" for the logins, if it is called "group" it will not work, everyone will log into the default domain (if it has no usergroups setting) or no domain (login fails).

2. Set SurgeFTP Global setting "Logging Level" to "debug". attempt to login

```
sslftp aaron:bcxmn@127.0.0.1
Connected to 127.0.0.1
starting SSL/TLS
secure protocol TLSv1 used.
Channel open, login Failed!
sslftp>
```

Hmm, what's this problem? aaron can't login? Click on the Log button at the top of SurgeFTP GUI, type in "aaron" and click search.

```
22 13:38:28.26:dbg:2496: start (USER aaron) 10
22 13:38:28.26:Info:2496: <-- USER aaron
22 13:38:28.26:dbg:2496: Got command user aaron
22 13:38:28.26:Info:2496: --> 331 Password required for aaron.
22 13:38:28.27:Info:2496: Spawned login error (-ERR aaron password wrong or not a valid user)
22 13:38:28.27:dbg:2496: user_login_generic(local.isp.com,aaron,*****,0) -ERR aaron password wrong or not a valid user
22 13:38:28.27:Info:2496: User Lookup failed aaron -ERR aaron password wrong or not a valid user
22 13:38:29.27:Info:2496: --> 530 Login incorrect aaron -ERR aaron password wrong or not a valid user
22 13:40:19.49:dbg:2476: Form content (domainid=&fname=surgeftp.log&find=aaron&last=8k&cmd_log=Search+Now)
```

After the "331 Password required for aaron." response we see that "Spawned login error (-ERR aaron password wrong or not a valid user)". The Spawned login error means that the error is from an external authentication module, nauth in this case. The error indicates that username or password does not exist.

Click on the users tab at the top of the GUI. Type in "aaron" in the Username field and click "Lookup".

User (aaron) not found in database for this domain. (-ERR aaron not found )

This means that user name aaron was not found, you need to enter it in the database, type in his username, password and the group he belongs to "local" in this case, and then click on "Save New User" not the save button.

Password Updated  
+OK aaron added to database

All is good, try logging in again

```
sslftp aaron:bcxmn@127.0.0.1
220 FTP Server
234 Enabling SSL
starting SSL/TLS
secure protocol TLSv1 used.
331 Password required for aaron.
230 User aaron logged in.
Successful "aaron" login
sslftp> pwd
257 "/" is current directory.
sslftp> ls -l
200 PORT command successful.
550 File or Directory does not exist (\)
550 File or Directory does not exist (\) 550 File or Directory does not exist (\)
sslftp>
```

Hmmm, whats wrong here? I think maybe the path may not be set up correctly for his user group. Let make the paths print out when aaron connects, go to User Class "local.isp.com" and scroll down to Banner. Type in "%virtual\_paths%" and click save. Enter this for all other user classes if it does not already exist (dont forget to click save!)

Try logging in again:

```
sslftp aaron:bcxmn@127.0.0.1
Progress Indicator On
Connected to 127.0.0.1
220 FTP Server
234 Enabling SSL
starting SSL/TLS
secure protocol TLSv1 used.
331 Password required for aaron.
230- Alias                Real path                Access
230- /                    \home\aaron             read+write
230 User aaron logged in.
Successful "aaron" login
sslftp> pwd
257 "/" is current directory.
sslftp> ls -l
200 PORT command successful.
150 Opening ASCII mode data connection for file list. (\)
226 Transfer complete. can't list: No such file or directory
sslftp>
```

Hmmm, whats wrong? the users home directory is not being set correctly (\home\aaron). This is the default users home location if no setting is set, so go check that setting. In this case it was empty so I went and set it to "c:\local\home\" which is what it is supposed to be.

```
sslftp aaron:bcxmn@127.0.0.1
Progress Indicator On
Connected to 127.0.0.1
220 FTP Server
234 Enabling SSL
starting SSL/TLS
secure protocol TLSv1 used.
331 Password required for aaron.
230- Alias                Real path                Access
230- /                    c:\local\home\aaron    read+write
230 User aaron logged in.
```

```
Successful "aaron" login
sslftp> pwd
257 "/" is current directory.
sslftp> ls -l
200 PORT command successful.
150 Opening ASCII mode data connection for file list. (\)
226 Transfer complete.
-rwxrwxrwx  1 owner    group          5 Aug 22 13:59 yes.txt
sslftp>
```

The file yes.txt is what I personally went and put in the location c:\local\home\aaaron\yes.txt so that I could see that the login was going to the correct location. It is all set up correctly for this domain now. Time to relax with a cuppa tea and a scone :-)

# Setting Up The Authentication Module

## Basic Steps, LDAPAuth example:

### 1) Download LDAP module

<http://netwinsite.com/dmail/utis.htm#ldapauth> extract and copy to c:\surgeftp\ldapauth.exe (LDAP is Windows only)

### 2) Edit ldapauth.ini file to configure for your system

[http://netwinsite.com/dmail/ldap.htm#ldapauth\\_ini\\_file\\_settings](http://netwinsite.com/dmail/ldap.htm#ldapauth_ini_file_settings)

### 3) Stop SurgeFTP server

4) Edit c:\winnt\surgeftp.ini, change authentication module setting  
authent\_process "C:\surgeftp\ldapauth.exe"

### 5) Start the SurgeFTP server

6) Add users if necessary, you may have existing users in LDAP database.

## In- depth Steps:

### 1) You need to decide on an authentication module.

Basically you want one to connect to the database of users that you already have. If it is System authentication, i.e. the operating system (Windows, Linux, Solaris) has a list of users and passwords, and you want to give those users access, just leave SurgeFTP the way it was installed as it's already set up for this kind of Authentication. If you want to change back to this, go to your SurgeFTP GUI interface <http://127.0.0.1:7021/> and click on "Global", change the "Authent Process" setting to "none (uses normal system user database)". SurgeFTP has to restart after saving this setting.

## Choose an Authent Module for your database:

Database Type	Module	Description
TCP/IP Shared over several servers	TCPAuth	TCPAuth is a TCPIP client+server module that will take any other module as its backend. Allows easy authentication across boxes and across platforms.

NetWin	NWAuth (included in installation)	This is our recommendation. Source provided. Please feel free to use it as a base if you are writing your own module.
RADIUS	RadiusAuth	authenticate with RADIUS server
LDAP	LDAPAuth	authenticate with LDAP server
ODBC	ODBCAuth	Our own authentication module for talking to an ODBC Driver for a Database (e.g. MS Access, MS SQL Server, ORACLE)
SQL	MySQLAuth	Our own authentication module for talking to a MySQL server.
Oracle user database	OracleAuth	This is our module to talk to an oracle user database.
UNIX system password file	UnixAuth	This is our module to talk to the UNIX system password file.
NT system	NTauth	This is our module to talk to the NT system user database.
Linux PAM	PamAuth	This is our module to talk to the a linux PAM module.

### **Download the authentication module**

(unless using NWAuth, it is included in SurgeFTP distribution).

Please note that these authentication modules are not specifically for SurgeFTP or DMail or SurgeMail, but work with all of them. When following the instructions, don't follow them blindly.

[This page has links to download Authentication Modules listed above](#)

For SurgeFTP, copy the Authentication module to the "c:\surgeftp" or "/usr/local/surgeftp" directory, or wherever you installed to, and set up the configuration file for the authentication module in that directory.

### **Authentication by Domain?**

If you are using Multiple or Virtual Domains for SurgeFTP, you can choose to use either the same set of usernames and passwords across all domains, or have a different set for each domain.

There are two methods for keeping logins unique across multiple domains, "Domain Prefix" or "Authent Domain".

Domain Prefix puts a unique identifier at the beginning of a username before passing it to the Authent Module, this is entered per domain setting and can be arbitrary. The setting to enter this into is called "Domain Authentication Prefix" and is found in each domain.

Authent Domain puts the suffix on the username before passing it to the Authent Process, e.g. a suffix of "@domain.com" which would be the name that you entered for that Virtual Domain (setting name is "Domain Name"). The Authent Domain setting is a single setting in the Global part of the SurgeFTP GUI interface.

The two methods can be combined, but it is a little pointless, and probably just confusing.

## **2) Edit the Authentication Module ini file.**

You need to be clever here as you need to configure the ini file for the authentication module that you have chosen. The settings determine how the data is extracted from the information source (usually database server of some type). There are links to settings for the ini file, follow them and learn all the settings and how to configure correctly.

## **3) Stop SurgeFTP Server**

On Windows, Use the Services console to stop SurgeFTP or open a DOS/shell box and type in "net stop surgeftp"

On Linux/Solaris, change to root user and run the script  
/usr/local/surgeftp/surgeftp\_stop.sh

## **4) edit c:\winnt\surgeftp.ini**

On Linux and Solaris the surgeftp.ini file is located at  
/etc/surgeftp.ini

Open the file in your favourite editor, notepad or vi are the best choices, locate the setting labled "authent\_process", if it does not exist, create it and set its value to the name of the authentication module.



e.g.

```
authent_process "C:\surgeftp\ldapauth.exe"
```

or

```
authent_process "/usr/local/surgeftp/nwauth"
```

## 5) Start SurgeFTP Server

On windows, use the Services console to start SurgeFTP or open a DOS/shell box and type in "net start surgeftp"

On Linux/Solaris, change to root user and run the script  
/usr/local/surgeftp/surgeftp\_start.sh

## 6) Does it work?

Add some users to the database through SurgeFTP GUI interface, go to <http://127.0.0.1:7021/> and click on "Global" then click on "Users"

Select a Domain to add the user to,  
Enter the username without any prefixing/suffixing on it. SurgeFTP now adds those automatically if need be (versions 2.0r17 onwards).

FTP to that domain, and try and log in :-)

```
c:\> sslftp 127.0.0.1
User: bob
Password: ****
230 User bob Logged in.
sslftp>
```

If it doesn't work, check the error response from logging in, the answer may well be right there.

If you have any problems email [surgeftp-support@netwinsite.com](mailto:surgeftp-support@netwinsite.com) with the error reported, the configuration file of the Authentication Module, all the steps (approx) of what you had done and what you were trying to make happen.

## Global Settings

Global settings are the settings that apply to the local server and set initial default values for all virtual hosts running on this server.

### SSL Encryption

SSL Encryption, if available on this platform, can be set to disable, allow, or require. There is also a class specific setting for this parameter, which will only have meaning if the global setting is set to 'allow'. For more details on SSL [see this web page](#)

### SSL Requires Client Certificate

Disable this setting for compatability and ease of use by FTP clients. If you enable this setting, FTP clients will be required to send a "client certificate" that was signed by the CA certificate in the file rootCA.pem in the SurgeFTP directory. With ftp this is just a bit of a hassle, as quite a few clients do not support this kind of verification. Basically, you should only use this setting if all your clients will have certificates signed by a trusted CA. SurgeFtp does not come with a default rootCA.pem file. You must either get one for the CA you want to trust, or you can (and probably should) act as your own CA and create certificates for your clients yourself. The sslftp command line client does support client certificates.

### FTP port (21)

This is the port that all standard FTP servers use. Change this setting only if you understand what you are doing. Changing this setting requires restarting SurgeFTP.

### This Web Manager Port http:// (7021)

The port that you want to use to connect to the Web Admin Gui tool. Setting the value to "-1" disables the http:// port. e.g. http://127.0.0.1:7021/ Changing this setting requires restarting SurgeFTP.

### This Web Manager Port https:// (9021)

The port that you want to use to connect to the Web Admin Gui tool with the **secure https protocol**. Setting the value to "-1" disables the https:// port. e.g. https://127.0.0.1:9021/ Changing this setting requires restarting SurgeFTP.

## **Implicit FTP port number**

This is an alternative method of SSL FTP, it starts SSL before any FTP command negotiation, usually set to port number 990 or 992 or 996. Set to 0 to disable.

## **Debug**

Sets the logging level. This is primarily intended for finding faults with the server. Info level logging is the default.

## **Alternative location to put log files**

This setting is the path to an alternative directory where the log files per domain can go. If this setting is empty, the default location is used, which is the SurgeFTP install directory, usually c:\surgeftp or /usr/local/surgeftp

## **Dayly Log Rolling**

This setting is should only be used when you want to keep all log files that SurgeFTP generates. When active, once per day the main log file is closed and renamed to surgeftpYYYYMMDD.log, where YYYYMMDD is the year month and day. These log files are not automatically deleted by SurgeFTP, and can get quite sizeable on busy systems.

## **Flushing log**

This makes the server flush log data after every write to the file. This badly affects performance but can sometimes be the only way to track down an unusual fault.

## **Connections limit per ip**

This setting limits any individual ip address from connecting more than the specified number of times. This can prevent various types of abuse and denial of service attacks. A value of 10 is probably low enough to prevent abuse without affecting real users.

## **SMTP mail gateway**

Enter the name of your SMTP mail server, so that SurgeFTP can send you your email messages.

## **Authent process**

The command line of a NetWin authentication module, by default SurgeFTP will use the system authentication database. However, you can use one of our standard modules for LDAP, ODBCAuth, MySQL, etc or write your own. For more information on these modules see the authentication section of the [DMail manual module list](#), which will tell

you the protocol and gives download pages to download the individual modules that we provide. You don't need to install DMail to use these.

The "ftpquota" response is recognised as a limit on the amount of filespace that a user can have, and the "ftpfromip" is a list of IP addresses that will always allow that user to connect from, eg ftpfromip="127.0.0.1,10.0.0.10"

You will need to manually edit /winnt/surgeftp.ini (/etc/surgeftp.ini) in order to change the path to use the module you download, as the web admin tool does not currently list all options. Do this with SurgeFTP stopped. Here is an example:

```
authent_process "D:/SurgeFTP/ldapauth.exe"
authent_domain ""
authent_number "1"
(note that ldapauth.exe,ini are placed in the d:/surgeftp directory)
```

Additional responses understood by SurgeFTP are:

ftphome="/home/user/ftp"	Users home directory
ftpquota="5000000"	The maximum number of bytes in that user's files.
ftpfromip="127.0.0.1,10.0.0.*"	a list of IP addresses that the user can connect from, list can be comma separated and include wild cards.
ftpgid=nnn	Users GID for unix file systems
groups="adults,staff"	Define usergroups
ftpuid=nnn	Users UID for unix file systems

## Importing Existing Users

If you change to SurgeFTP from another FTP server, and you want to import existing user logins into SurgeFTP, and you want to use nwauth for authentication, you can do this with the following steps.

1) You need to create a file with a list of all the user's information in this format:

```
./nwauth set username1 PASSWORD
./nwauth set username2 PASSWORD
./nwauth set username3 PASSWORD
etc...
```

If your users have a nonstandard home path each, then you should import this data at the same time, and use lines in this format:

```
./nwauth set username1 PASSWORD ftphome="/path/to/user1/home/dir"
./nwauth set username2 PASSWORD ftphome="/path/to/user2/home/dir"
```

```
./nwauth set username3 PASSWORD ftphome="/path/to/user3/home/dir"  
etc...
```

2) Execute the script file in the "/usr/local/surfeftp" dir on Unix platforms (you may need to make the file executable by typing in "chmod +x scriptfilename"), or in the C:\surfeftp installation directory on Windows. Or wherever the nwauth executable is for SurgeFTP.

### **Authent number**

The number of concurrent authent processes to run. If you are using a slow external authent module (e.g. sql etc) it is probably worth running 3-4. There is no need to have more than 1 when using nwauth.exe.

### **Authent domain**

If this is 'true', the virtual domain name is appended to the username before it is passed to the authent process. This lets the authent process deal with virtual domains. If this is not ticked, user 'bob' on one virtual domain will have the same password as user 'bob' on another virtual domain.

### **Lookup IP names**

If ticked, SurgeFTP will lookup the ip name of connecting users. This can make controlling access and reading log files easier, but it also wastes resources and can slow down connections from users without reverse dns entries. SurgeFTP does include a cache, so normally DNS lookups will not slow it down as much as other servers. If your connections regularly take 30 seconds to complete, you probably have a mis-configured DNS server, and disabling this feature will probably solve the problem.

### **Auto restart server**

If turned on, SurgeFTP will spawn a second process that checks every 30 seconds to see if the server is still running. If it isn't running but its pid file still exists (ie. if it died), this second process restarts the missing server and sends the manager of the account an email reporting the fault.

For this to work on NT you will need to set Dr Watson to NOT show visual notification of faults:

```
This sets Dr Watson to be the default debugger)
```

```
c:/> drwtsn32 /i
```

```
This brings up the Dr Watson settings, un-tick "Visual Notification"
```

```
c:/> drwtsn32
```

On Windows 98 you would also have to disable visual notification to make this feature work.

As it is highly unlikely that the server will die and this feature does not need to be turned on now. However it is available to be set up to provide additional comfort, or to be set up if a problem was experienced and the server needed to be restarted automatically while the issue is identified.

### **Global Listing Style**

Set to choose the directory listing style, the same as a UNIX FTP server or the same as a Windows FTP server.

### **Global Thread Reuse**

Tick this if you want threads to be reused for another FTP connection after the previous FTP connection has ended. Any threads waiting for a connection will appear as "Idle Thread" under the Status Menu of Web GUI.

### **Bind Server and Admin to specific IP addresses**

If this setting is left blank, the SurgeFTP service will be accessible through all IP addresses that your computer has. If you only want SurgeFTP accessible through certain IP addresses, enter all those addresses in this setting in a comma separated list (no spaces).

The ftp service AND the Web Administration tool are bound by this binding to IP numbers, and changing the setting is not reflected until you restart the SurgeFTP server. It is possible to block out your access to the web admin tool if you do not include "127.0.0.1" in the list, so be careful.

```
example setting:  
"127.0.0.1,10.0.0.21"
```

### **Only allow admin from**

This setting is an IP wildcard string that lets you specify a range of IP addresses of computers that are allowed to connect to the web administration tool. If you specify "127.0.0.1" then only the server can connect to itself, and if you specify "10.0.0.\*" then any IP address that matches that string can connect.

### **Bind Server to IP addresses**

Binds access to the FTP server and web GUI to specific IP addresses.

This setting is the name of all the IP addresses that you want your server to respond

to, or if empty, it will accept for any local IP number. This setting only makes sense when your computer has multiple virtual IP numbers.

Make sure that you set 127.0.0.1 as one of the addresses when you have this setting set, so that you can still access the web interface!

This setting requires a restart of the SurgeFTP server for the changes to take affect, in a future version this restart may not be required.

### **Only Allow admin from**

This setting is an IP address, if it is set then the web GUI interface will only be available to someone connecting from the nominated IP address.

### **Watcher Program**

These settings are the names of an executable or batch/script file(s) that is run when a file is uploaded or downloaded to the surgeftp server. The program is passed five command line parameters, filename, filesize, User that uploaded, their IP address and if the transfer was upload or download. There may be other parameters in future versions. An example of the passed parameters:

```
"file=f:\home\user.txt" "bytes=186" "user=Administrator" "userip=127.0.0.1" "transfer=downloaded"  
or  
"file=f:\home\user.txt" "bytes=186" "user=Administrator" "userip=127.0.0.1" "transfer=uploaded"
```

A program that passes these parameters should not necessarily rely on them being in the same order, but the prefix of each will be the same (file=, bytes=, user=, userip=, transfer=).

### **Activate detection**

This turns on the Anonymous hammering checking mechanism. The mechanism is designed to prevent a person from making thousands of anonymous connections in order to prevent access to the server for other users.

You can see what IPs are being blocked on the Status Page, when the setting is activated.

### **Time to monitor for (seconds)**

This setting is a measure of time that SurgeFTP remembers the connections that are made by anonymous users.

### **Maximum users in time period**

This setting is a number of anonymous connections from any single IP address.

### **Period to block for (seconds)**

**This setting is the amount of time to actively block Anonymous access from an IP address that has exceeded the maximum limit of connections. If the Limit is exceeded then the blocking will last until the "time to block" has elapsed, then anonymous connections will be allowed again.**



[Index](#)**Domain Name**

This is the name of this virtual domain. It is displayed when users connect. e.g. ftp.netwinsite.com

**Managers Email**

This is the managers Email address. This is not currently used, but in future may be used to send weekly reports and urgent problem Emails.

**Virtual Domain IP**

This is the IP number of this virtual domain. You will also need to configure your operating system and network to respond to this IP address. How to do this for specific operating systems is described in more detail in the DMail manual <http://netwinsite.com/dmail/manual.htm>

**Deny users from IP's**

Any user with this IP address (or wild card) will be rejected. This is a good way to block problem people :-), e.g. "2.3.4.\*" you can also give a list and use the 'not' character. For example, to block all users except those on the local intranet addresses you might use: "\*,!10.0.0.\*"

Note: Do not use spaces in settings, e.g. "\* , !10.0.0.\*" would not work as expected

**Message for denied users**

This is the message that will be displayed when the 'deny' IP address string matches.

**Domain Authentication Prefix**

Use this to add a prefix to the username authentication for this domain only. It is used to make a user name unique for each domain that has that login name.

**Max login fails**

After the specified number of guesses, the user will be disconnected.

**There is no particular point to this setting and we do not recommend setting it below 5, which is the default. (There is a better mechanism in the server which prevents password guessing)**

## **Greetings**

**This is the string displayed to the user when they connect to this domain, before they login.**

## **Anon Password**

**With anonymous logins, the user is prompted for their email address instead of a password, traditionally FTP servers then threw away this information. However, if you really want it, then you may want to set this setting to ensure that the user gives a sensible looking address.**

**Name of this class**

This setting has no function, it's purpose is simply to remind you what this class is defining.

**Type of users**

There are two types of user, real and anonymous. Essentially, if the user logs in with the username 'anonymous', they are in the anonymous class of user and will only be members of a class with Anonymous ticked. If the user logs in with a genuine username and password, they are considered to be a 'real' user.

**Specific users in this class**

This lets you refine a class to specific users, e.g. "bob,fred" or even wild cards, "\*jones", or lists of users including the 'not' character, e.g. all users except bob "\*,!bob"

**IP Addresses of connecting users**

Again, this refines who is a member of this class. The user's IP address must match this parameter (if the parameter is not blank). You can use lists and wild cards and the not character, e.g. "1.2.3.\*". In this second example, all users in the 1.2.3 network are allowed to connect, with the exception of the user with the ip address 1.2.3.4, "1.2.3.\*,!1.2.3.4"

**Directory Aliases**

You can allow your FTP users to have access to multiple directories plus their home directory. Perhaps used to provide access to certain common files, or to allow one class of users access to a special set of files in a directory.

You do this by specifying an "alias directory" the user would see this as an additional directory, and if they change into that directory, they can access the files in real path associated with that alias.

Alias	Path
/	~
/files	c:\installers

If user Bob logs in he will see the files in his home directory "/" and a directory listed as "files".

If you do provide access to other areas in the file system like this, make sure that there are appropriate files protection rules in place, either in the operating system, or configured in SurgeFTP

**Define home and alias directories accessible for this class of user**

This table lets you define the translation between virtual paths and real disk paths. Each path can also have it's own read/write rules. Often you will give anonymous users write access to only one directory, and read access to other areas.

When defining aliases for a real user there are two common methods. One is to define the users root as their home directory:

Alias	Path
/	~

This limits each user to access only their own files unless you add another alias to point to some common area, etc. The normal UNIX FTP servers behavior can be emulated with a primary alias like this:

Alias	Path
~	~
/	/

This is translated for a user bob to this:

Alias	Path
/home/bob	/home/bob
/	/

which lets the user move to any directory on the system (assuming they have access to those files as a user).

One last useful option, if your users all have their directories under the /home tree, is to limit ftp users to that part of the file system like this:

Alias	Path
~	~
/home	/home

The result being that bob gets /home/bob as their initial path, and they can move between any directory below the /home tree, and thus read other users' files (assuming the files are not protected from reading by the operating system).

As a final example, if you only want to allow a user to see their own files, but to see directory specifications of the entire path, use a single alias like this:

Alias	Path
~	~

**Limit:** All directory names and file paths are limited to 200 characters. If this limitation is ever a real problem please let us know.

## SSL Encryption

SSL Encryption, if available on this platform and can be set to disable, allow or require. There is also a global setting for this parameter, which must be set in order for the class specific setting to have any meaning. For more details on SSL [see this web page](#).

### **Max bytes per second**

This setting limits the speed at which data can be downloaded from the server. This is commonly used to prevent all of your bandwidth from being used by a single or a few customers downloading huge files. The daily limit below is often more useful as it prevents abuse but doesn't slow everyone down in the process.

### **Daily download limit per IP address**

This limits each user (or unique IP address) to a certain number of megabytes of downloads per day. This is ideal for preventing abuse. Often a single user will mistakenly download every file from your server, or repeatedly download the same file all day long, and this could cost you real money. This limit stops such abuse (intentional or accidental) without stopping your real users/customers.

### **Idle connection timeout**

After the specified number of minutes, the server will terminate an idle link to recover lost resources and prevent dead links from using up all your spare channels. However, many other FTP servers have this idle limit set so low it is simply annoying.

### **Max concurrent users connected**

This limit applies to all users in this virtual domain, and is good for limiting the total resource that can be used by this domain. This also prevents some denial of service attacks.

### **Files that cannot be retrieved**

This is a 'paranoid' safety mechanism. It is possible to accidentally give read access to a directory containing a password file or some other 'secret' information. As a precaution you can list the names of such files here, and, even if the user can download other files from the same directory, the server will prevent them from fetching these secret files. Typically on unix this should be set to ".netrc,password"

### **Files that cannot be stored locally (uploaded)**

This is a 'paranoid' safety mechanism. It can prevent users from uploading files of specific types.

### **Root path for users (~ translation uses this)**

In the aliases for this domain you can use ~ to indicate the home directory of the user that has logged in. So if the root path for users is /home, the alias specified ~/upload, and the current logged in user is 'bob', the resulting path would be /home/bob/upload

## Hashing of users home directory

This setting lets you access existing hashed directories, or lets you specify a hashing method for an optimised directory structure. The setting is a string, combinations of these three characters "f", "o" and "/".

Use "f" for the first letter of the users name.

Use "o" for the next letter of the users name (if there is a next letter).

Use "/" for a directory separator.

The string used, is converted and inserted after the "Root path for users" and before the users name. This setting only works when the Root path for users (above) is set.

examples:

```
Root path for users "d:\ftphome\  
hashing string "f/o"  
user "bob" logs into path d:\ftphome\b\o\bob  
user "blackadder" logs into path d:\ftphome\b\l\blackadder  
  
Root path for users "m:\home\  
hashing string "fo"  
user "bob" logs into path m:\home\bo\bob  
user "blackadder" logs into path m:\ome\bl\blackadder
```

## Limit connections per ip (1- n)

This limits the concurrent users per IP address connected to the server. This is useful to prevent abuse from FTP clients that open multiple connections to get more than their share of bandwidth to your system. Often this stems from people using speed throttling FTP servers instead of limiting the MB downloads per day as you can do with this server. If your server really is heavily used, this setting allows you to prevent this kind of sneaky abuse/cheating.

## Passive mode IP Address (use when inside NAT fire wall)

When using an FTP server through a NAT fire wall, this setting allows you to tell the server to give the NAT gateways 'IP' address instead of its own to users connecting from outside. This is done by creating a class that only external users use. You will also need to specify a passive IP port, and map those ports from the NAT firewall into the FTP server ports.

## Passive mode starting IP port number (use when inside NAT fire wall)

When the FTP server wants to listen on a port, it will start at this number and increment the port until it finds a free port. You should map this same range of ports from the NAT gateway into the FTP server. Typically, a range of 50-100 will be sufficient, roughly how many concurrent users you expect.

## Impersonate users when accessing files

This is an NT specific setting. This setting has 'odd' effects regarding mapping of network drives, etc. Usually on NT it is best turned off.

## **Allow 'FTP PROXY' 3 way transfers**

If enabled, this allows an FTP client to transfer files between two FTP servers. This can be very efficient and quite neat. However, it can also be a security problem as it allows a hacker to send files from your system to someone else's system. This can make it very difficult to track down the hacker.

Also, this is very rarely used in the real world. More commonly, when this is attempted it is actually caused by a mis-configured NAT TCP/IP router, and the user will simply not get the file they are requesting. By disabling this feature, the user gets a clear error message telling them to use passive mode to transfer files.

## **Hide real directory information**

Some people believe that hiding real directory information from users increases the security of your system. This is probably true but it is generally not a significant security problem. By default, this is off because the real directory path is often very helpful in sorting out problems, and we believe that making the server easier to use and administer is more important than this subtle security enhancement. However, the option is provided here if you do want/need to be paranoid.

## **Banner**

The banner is displayed after the user has logged in. Some FTP clients hide this information but most will display it in some way. Typically you use this banner to tell users what they will find in various directories. You can use a special variable `%virtual_paths%` which the server will replace with a list of aliases that are defined and their real physical paths.

[Back to server](#)

**Index****Local file path**

The directory to copy files to on this system.

**Remote host**

The remote computer that has the files you want to mirror/backup.

**Remote path**

The path on the remote system that you want to mirror/backup.

**Files to get**

Files you want to mirror. This can be a wild card or list, e.g. "\*", or "\*.c,\*.h"

**Sub directories**

If set, this makes the server copy all sub directories as well.

**Use Full Path Local**

If set, this copys files from remote site path to local site path plus the remote site path. If not set, this copys files from remote site path to local site path, plus any relative directory names.

**Minutes between checks**

This specifies how many minutes between checks. Setting this too small will waste bandwidth.

**Username**

This is the username that will be used on the remote FTP server to access the files. You may specify 'anonymous' or a real username.

**Password**

This is the password on the remote system. For anonymous access, this should be your email address e.g. 'bob@netwin.co.nz'



## **Delete files removed remotely**

If set, this will make SurgeFTP delete any local files that were deleted on the remote system. It does not actively delete files that never existed on the remote system.

[Back to server](#)

## Index

<b>Uptime</b>	The amount of time elapsed since current SurgeFTP process was started.
<b>Served FTP sessions</b>	The number of connections processed on the FTP (21) or implicit FTP (990) ports.
<b>Served Web Admin Pages</b>	The number of html pages that SurgeFTP has served through its Web Admin GUI tool.
<b>Served Web Admin Images</b>	The number of image files (jpeg's) that SurgeFTP has served through its Web Admin GUI tool.
<b>Served Erroneous Connections</b>	The number of connections made to SurgeFTP that did not result in any useful data transfer, e.g. FTP port opens and then closes with no data being sent by client.
<b>SSL/TLS Encryption</b>	Indicates if the version of SurgeFTP supports SSL/TLS and if the global setting is set to "disable", "allow" or "require"
<b>Surgeftp</b>	Indicated the version number of SurgeFTP software.

## The Table

The table shows what SurgeFTP is currently doing.

<b>Thread</b>	This indicates a unique SurgeFTP thread that processes requests for connecting users.
<b>Times used</b>	When "Thread Reuse" is active, this records the number of "Sessions" or "user connections" that this thread has processed.
<b>CPU</b>	Indicates how much CPU time the computer has actively spent processing requests on this connection.
<b>Session</b>	Indicates how many connections of the same "Task" (see below) have connected before this one.
<b>Duration</b>	The number of seconds elapsed since the user connected to SurgeFTP, or number of seconds since the user disconnected.
<b>IP Address</b>	The IP Address of the connected user.
<b>SSL?</b>	Indicates if the connection is encrypting data using SSL.
<b>Task</b>	General Task information, one of (FTP, Web Admin, Opening Connection)

<b>(User)</b>	Indicates the Username of the user connected.
<b>Description</b>	Indicates the current action of the current user (if connected)

[Index](#)

## **Report**

The report screen allows you to generate a report covering various periods. As the report is generated on the fly, it will take longer to create a report for a long time period.

There are two basic types of report - report by file and report by user. One is ideal for finding which files are most downloaded, the other for finding which users are abusing your system or creating the most traffic.

From the top level report you can click on the file or user and get a more detailed report. Running this test on our server showed 30% of our bandwidth on a particular day had been wasted by a single user downloading our entire site for no apparent reason, the mb/user/day limits are ideal for stopping this kind of accidental abuse that can cost you real money.

[Index](#)

## **Log searching**

With this form you can display the last part of the main dftp log file. You can also access several other log files. Each domain has a log of FTP protocol commands, and there is a log just for 'errors'.

The search option will let you pick out significant lines from a large log file.

# SurgeFTP - Brilliant, standards compliant, FTP server

## SurgeFTP Links

- [Download](#)
- [Purchase](#)
- [Pre Sales Support](#)
- [F.A.Q.](#)
- [Manual](#)
- [Performance/Threads](#)
- [Easy Management](#)
- [Unlimited Virtual Domains](#)
- [Version History](#)

## Server FAQ

- [Passive ports and SSL and NAT / Peephole settings](#)
- [No username & password prompt for the Web Admin? http://127.0.0.1:7021/](#)
- [What's all this SSL stuff? \(click here for SSL FAQ\)](#)
- [How do I restart the server?](#)
- [How do I get to the web manager?](#)
- [How do I change the web manager password?](#)
- [Where do I enter my registration key?](#)
- [Why is the manager sluggish on Netscape & Win 2000?](#)
- [Concurrent user limits.](#)
- [Converting from standard unix FTP server.](#)
- [How can I access or share a mapped Windows Drive through SurgeFTP?](#)
- [Why does WS FTP Pro fail to connect in SSL/TLS mode?](#)

### No username & password prompt for the Web Admin? http://127.0.0.1:7021/

If you do not get the login username/Password prompt, in IE, go to Menu ->Tools , Security, click Internet Icon, click "Custom level" and scroll to bottom of the list, find User Authentication - Logon - Choose "Prompt for user name and password", click on OK, and OK on all other windows you just opened.

### How do I restart the server?

On NT, type in: **net start SurgeFTP**

On 95/98, type in: **\\windows\surgeftp.exe**

On Unix, **/usr/local/surgeftp/surgeftp\_start.sh**

Unfortunately, there is currently no way to start it remotely. You can run it in "stopped mode" where it does not accept FTP connections, but where you can continue to use the manager.

### How do I get to the web manager?

If you are accessing the web admin tool over the internet you should use the https://your.ftp.server:9021 port as it is secure for the admin password to be accessed. Ideally you should disable the http:7021 port from IPs other than 127.0.0.1, and change the 9021 port to something only you know of.

From a default install use your web browser and type in a link like this: http://your.ftp.server:7021 If you are on the machine itself this link should work http://127.0.0.1:7021

### How do I change the web manager password?

Create a DOS/SHELL window and type in:

```
SurgeFTP -password
```

### Where do I enter my registration key?

In the web manager, click on 'Register' at the top.

### Why is the manager sluggish on Netscape & Win 2000?

This is a bug in Netscape. It steals all the CPU while waiting for a web page to arrive, but since the server is on the same system that means it responds slowly. You can fix it in task manager:- set the priority for netscape down to 'below normal' and suddenly it will work properly!

### Concurrent user limits.

The number of concurrent users is Operating System dependent, and basically a matter of how many threads and file handles the operating system supports, without running too low. Here are the approximate figures...

Operating system	Concurrent FTP sessions
Windows NT/2K/XP	1,900
OSX	1,900
FreeBSD	2,000
Linux	2,000
Solaris 7, 8 & 9	100

### Converting from standard unix FTP server.

When you install SurgeFTP, it allows normal user access to their home directory, defined by the system user database. Although SurgeFTP can easily replace the standard unix FTP server, there are some differences you need to keep in mind, specifically:

- SurgeFTP does not support executing programs that are in the path (This feature is usually disabled anyway as it is a security risk)
- It does not support auto compression of files to .Z. This feature is probably not very sensible anyway as it is more efficient to supply the files in compressed format rather than compress them for each user.

### How can I access or share a mapped Windows Drive through SurgeFTP?

This is needed if you need to configure SurgeFTP to run as a particular user to access a network drive etc.

- Click Start, point to Settings, and then click Control Panel.
- Double-click Administrative Tools, and then double-click Local Security Policy.
- Double-click Security Settings, double-click Local Policies, and then double-click User Rights Assignment.
- Double-click the user right you want to change, "Act as part of the operating system"
- Click Add, and then click the accounts to which you want to assign the right.
- Click OK, and then click OK again.

### Why does WS\_FTP Pro fail to connect in SSL/TLS mode?

The evaluation version of WS\_FTP Pro is limited to 40 bit encryption, and is unable to negotiate a common cipher with SurgeFTP. This problem does not occur with the registered version of WS\_FTP Pro. FTP Connections without SSL/TLS will work correctly.

### Passive ports and SSL and NAT/peep holes.

When SSL is used your smart router / NAT fire wall which tries to 'spy' on the ftp protocol and automatically modify the pasv command and automatically create peep holes for the ftp DATA channels will fail, because you can't spy on SSL traffic (that's the whole idea of encryption, to make spying impossible :-)

If possible turn off 'smart ftp' features in your NAT/Router.

Create a 'class' in your surgeftp settings and setup manually the passive settings to be correct for outside your firewall:

```
passive_ipnumber "1.2.3.4"
passive_port "4021"
passive_port_max "4031"
```

Then in your NAT firewall, which in this case must have an external IP address of 1.2.3.4, you map the incoming ports '4021...4031' to your ftp server, ports 4021...4031

Then as long as you do transfers in passive mode it will work.







# SurgeFTP

**SurgeFTP Links**[Download](#)[Purchase](#)[Pre Sales Support](#)[F.A.Q.](#)[Manual](#)[Performance/](#)[Threads](#)[Easy Management](#)[Unlimited Virtual](#)[Domains](#)[Version History](#)

## SurgeFTP Change History

### SurgeFTP 2.2m3 6/May/2005

- Fixed restart for 'store' operations.

### SurgeFTP 2.2m2 6/Apr/2005

- Fixed minor security fault.

### SurgeFTP 2.2k13 1/Jan/2005

- Fixed mutex problem in mykey.c processing, made linux build use large file switches.

### SurgeFTP 2.2k12 12/Oct/2004

- Release build
- Minor bug fixes

### SurgeFTP 2.2k11 23/Sep/2004

- Fixed mlsd response

### SurgeFTP 2.2k7 8/Sep/2004

- Added user impersonate to list and nlst functions
- Minor bug fixes

### SurgeFTP 2.2k6 15/Jun/2004

- New activation system (See <http://www.netwinsite.com/activate.htm>)
- Minor bug fixes

### SurgeFTP 2.2k5 26/Apr/2004

- Updated OpenSSL for new security fixes

### SurgeFTP 2.2k4 22/Mar/2004

- Fixed SSL require client certificate bug

### SurgeFTP 2.2k3 9/Feb/2004

- Install path fixed
- DNS bug fixed

### SurgeFTP 2.2k2 7/Jan/2004

- Install issue where it ignores the desired path (not fixed yet, still looking)

### SurgeFTP 2.2k1 5/Nov/2003

- Made nwaauth default authent module
- Fixed lockups in authent process if not defined

### SurgeFTP 2.2j8 9/October/2003

- Updated OpenSSL due to important bug fixes

### SurgeFTP 2.2j7 24/September/2003

- Fixed restarting reuse address
- Fixed saving of report settings

### SurgeFTP 2.2j6 3/September/2003

- Fixed NLST command for non wildcard parameter
- Fixed 100% CPU use for file uploads/downloads

### SurgeFTP 2.2j4 1/September/2003

- file list 150 response during TLS/SSL session is now at right time interval

### SurgeFTP 2.2j3 28/August/2003

- Fix for "421 Timeout..." on manager channel

### SurgeFTP 2.2j2 27/August/2003

- Changed STAT command to include SSL mode and cipher group name for command channel.
- Changed for better response times to accepting many connections simultaneously
- Changed log messages, removed some supurflous, replaced with better ones.
- Changed restart command, it now handles 64bit integers for restarting large files.
- Added individual file size option for emailed reports.
- Added cipher selection for NIST approved ciphers 3DES & AES.
- Fixed spawning of external authentication processes to occur in the main thread (non-windows problem).
- Fixed bug where SurgeFTP crashes on "signal terminate" while restarting.
- Fixed error messages for anonymous login without home directory.
- Fixed problem with emailed reports crashing SurgeFTP.
- Fixed inaccuracy with dayly MB download limit.
- Fixed hcount errors in log file
- Fixed passwords with spaces (valid only for Windows NT system authentication)
- Fixed value of domain authent command line options not being shown
- Fixed erroneous reporting that seek failed.

### SurgeFTP 2.2g6 18/June/2003

- Added new user program, run when user first logs in, to set up their home folder.
- Changed emailed reports to list "transferred" rather than "filesize" for kbyte count
- Changed emailed reports of type "week/\*" to only be sent that one day, rather than every day
- Changed Expired evaluation period to no longer provide ftp access.
- Fixed corruption of email report settings.
- Fixed internal "external authentication" cache to cache for 10min rather than 10hours

- Fixed external authentication ftphome setting to see decimal point as end of number
- Fixed problem with external authentication module handling code (from 2.2g5).

### SurgeFTP 2.2g1 8/May/2003

- Added ftp SSCN command (Set Secured Client Negotiation) as per <http://www.raidenftpd.com/kb/kb000000037.htm>
- Fixed bug in emailed reports indicating incorrectly empty lists "(no matching files located)"

### SurgeFTP 2.2g 6/May/2003

- Added setting to Global Authentication section: Strip User Domain
- Added some more help pages.

### SurgeFTP 2.2f9 17/April/2003

- Updated STAT command 211-response to use actual domain name instead of "hostname string"
- Updated/added help pages, added some info on configuring for NAT/firewall
- Added milli seconds to logging on non-windows systems
- Cleared up some logging lines - fewer error messages
- Removed some old ini settings that did nothing
- Fixed SETEGID mutex locking problem on solaris
- Fixed file handle problem on OSX crashing after some days running
- Made list\_aliases default to 'true' on installation and for new domains

### SurgeFTP 2.2f4 14/March/2003

- fixed closing of data channel for retr of non-existent file.

### SurgeFTP 2.2f3 11/March/2003

- fixed mirroring issue of not getting subdirectories
- Added in a "Self Diagnostic" Thread which can allow surgeftp to crash after a time when it would otherwise completely lockup
- Updated uninstall to remove rc startup links (linux)

### SurgeFTP 2.2f 24/February/2003

- fixed download kb/sec limit, was not working for limits below 65kb/sec
- fixed quota cache memory file not being written to disk ".surgeftp\_quota" this means it will not recalculate quota on every login
- changed quota to allow 64bit int size limits.
- sslftp is now automatically installed, cleans up install/upgrade.

### SurgeFTP 2.2d 19/February/2003

- added mirror setting - "Use SSL"
- added setting - "force lowercase of home path" user class setting
- removed some hcount error messages that were incorrect
- fixed file/dir incorrect listing with "list .." traversing aliases
- fixed user home path generation
- fixed upgrade copying the surgeftp executable into correct directory (windows)
- direct install of sslftp, no additional script file.
- fixed response to CDUP command (2.2b)

### SurgeFTP 2.1z8 3/February/2003

- added image in userclass page indicating home path

- fixed install issues - missing templates
- fixed ssl (random number error) on osx/solaris - surgeftp adds entropy
- fixed minor osx details for install/upgrade

### SurgeFTP 2.1z7 17/January/2003

- fix temp license key not expiring
- fix for when thread crashes - surgeftp restarts with monitor process
- fix for "Too many file handles open" crashes, associated with Daily Log rotation setting
- fix compression method on main\_photo.png file so that it displays in more browsers correctly.
- update osx build to install standard script to start surgeftp on boot

### SurgeFTP 2.1z1 5/December/2002

- fix bug in e-reporting where surgeftp can crash
- fix bug in e-reporting where surgeftp can crash on delete
- improved signal handling

### SurgeFTP 2.1y9 25/November/2002

- corrected report email headers To: From: Date:
- fixed recurring report filter string to come from correct form field
- added support for report email filter field to be comma separated wildcard list
- removed error log message "ftp thread started."

### SurgeFTP 2.1y8 21/November/2002

- added support for SIGHUP signal to reload config file.
- added setting for choosing the length of time that xfer\*.dat files are kept for
- fixed directory wildcard list returning -1 for size for case sensitive wildcard match
- fixed restart action to correctly restart mirror and ereport processes.

### SurgeFTP 2.1y7 14/November/2002

- improved file io/tcp use for faster transfer speeds in normal and ssl modes.
- dailyquota added, limits bytes per day per userlogon
- added command line option parameter for external auth processes.

### SurgeFTP 2.1y4 5/November/2002

- fixed login caching not caching of external auth parameters
- fixed nolist access sometimes not working

### SurgeFTP 2.1y3 5/November/2002

- fixed launching of external auth process by removing quotes from added path variable
- improved install script for Solaris version
- fixed default values from ini file coming through fixed initial denial of service from global limit setting.

### SurgeFTP 2.1y2 4/November/2002

- added global limit setting for total concurrent users.
- improved logging of open files in the status window
- corrected Solaris install scripts to install startup & shutdown scripts correctly
- fix mutex bug with emailed reports
- fix crash on install on Solaris system

### SurgeFTP 2.1y1 31/October/2002

- data transfer speed improvements
- osx version now works (handles signal 10) & correct filesize shown
- fixed spawning monitor process on linux with non-default install path (again)

### SurgeFTP 2.1y 29/October/2002

- emailed ftp reports feature introduced.
- usergroup associated directories
- environment variables now included for watcher program
- slightly faster time to shutdown surgeftp
- implicit port is now enabled by default to port 990
- can now obtain binary version from command line flag '-version'
- command channel now requires less system resources
- fixed saving new classes writing mapping directories correctly to ini file.
- fixed spawning monitor process on linux with non-default install path.
- fixed surgeftp use of linux/unix system database, now users home directory defined by system
- fixed wild card listing returning correct file size
- fixed xfer.dat and watcher report getting correct variable values (bytes,user,userip)
- sslftp moves sslftp.txt file settings into registry for windows.

### SurgeFTP 2.1x 26/September/2002

- fixed windows XP Authentication problem, surgeftp logins must now also be given "logon as a batch job" for windows NT System Authentication.
- openssl binary (and .cnf) copied to surgeftp install directory
- updated mirror remote file path handling, uses specified path (with or without specified prefix slash)
- corrected domain list for report & graph, when not using standard authentication settings.
- New User class is not created before you click on "save".
- updated uninstall to ask for confirmation, and confirm uninstall.

### SurgeFTP 2.1w 18/September/2002

- fixed size command to return 550 when invalid filename used.
- fixed windows listing style to allow "cd /dir", "cd /dir"
- fixed windows listing to show correct file date
- fixed windows listing showing time and filesize in filename (bad date format)
- updated mirror to not add slash prefix to remote host path (some servers not recognise full path)
- cached external auth user responses are flushed when server is "restarted"
- quota is now enforced during file transfer.
- quota file written, and quota calculated from correct location.

### SurgeFTP 2.1u 10/September/2002

- fixed cache lookups setting all external auth variables correctly
- fixed external authentication parameters disappearing (with multiple parameters)
- fixed ini file LF char stopping ftp server from loading. (Surgeftp stops when started)
- fixed surgeftp user lockup on stor file (2.1s only).

### SurgeFTP 2.1s 5/September/2002

- added optional authentication process per domain settings, list on status page
- added support for files larger than 2GB, now handles files up to 2\*\*63-1 bytes.
- added "accountstatus" flag to external auth response scanning
- included openssl in distribution to make certificate with "surgeftp\_ca" script file.
- fixed caching of external auth user logins, cache is now used, upto 400 logins, upto 10 minutes
- fixed "NLST \\*" listing.
- fixed too many user classes in a domain crashing SurgeFTP (29+ classes) (was actually limit on ini file size 20kb)
- fixed STAT on single file to return data, previously no data.

- sslftp fixed rare crash on mputs command.
- sslftp fixed showing "status" command return data.

### SurgeFTP 2.1q 22/August/2002

- fixed DELE command not working with "Act as user" setting on unix type systems
- changed list message "226 Transfer complete." for empty directory to "226 Transfer complete. (no files in directory)."
- added directory mapping for authentication's ftphome setting - class setting
- fixed STAT on file to return 213 response (was 211).
- fixed STAT on file to use "213-" line before file stats.
- fixed MLST on file to return 550 response for a failure (was 553).
- fixed SIZE on file to return 550 response for a failure (was 553).
- fixed "NLST -l /dir" returning real path and dir prefix
- sslftp progress indicator indicates percent transfer and total bytes to transfer

### SurgeFTP 2.1p 20/August/2002

- fixed SIZE command to return 553 response if file does not exist.
- fixed too many user classes in a domain crashing SurgeFTP (29+ classes)
- sslftp does not retry if retrying is hopeless (i.e. put non existant local file name)
- sslftp now correctly autoconfirms ascwww.kouwell.comii transfered files

### SurgeFTP 2.1o 19/August/2002

- rewrote users home directory code, fix multiple bugs with user in wrong home directory
- Added openssl executable and correct make\_ca shell command to make certificate
- fixed MDTM command to return 553 instead of 213 for on some failures
- output from CWD and PWD now reflect the global setting "Output in Windows or Unix style"

### SurgeFTP 2.1n 13/August/2002

- Added Domain Authentication Suffix setting - optional per domain
- fixed alias mapping for anonymous login to specific path (rather than ~ path).

### SurgeFTP 2.1m 6/August/2002

- Surge now uses OpenSSL in all builds (2.1m and later)
- Surge has now support for user home dir to be user subdir e.g. ~/public\_html
- Surge fix of broken foo hashing algorithm (the slash wasn't working)
- sslftp has new commands "compare", "autoretry", "autoconfirm", "memory"

### SurgeFTP 2.1k 31/July/2002

- added extra permission checking for accepting upload/download files.
- fixed Deleting a user with domain suffix authentication
- fixed anonymous login without home dir set crashing SurgeFTP
- fixed some alias not showing up in list output

### SurgeFTP 2.1j 16/July/2002

- Fix SSL dropping connection (very rare bug) - strange client errors on particular files
- Windows and unix filepaths are displayed with correct seperator
- sslftp updated - progress indicator uses commas in byte count.
- sslftp updated - logs in with username and password passed on commandline "sslftp user:pass@domain"
- fixed minor memory leak of user home path (~20bytes per login), occured with certain settings
- fixed user quota being written to wrong directory, fixed subsequent incorrect quota value
- fixed user home setting, occured with certain settings
- fixed Mirror Last Fetch from showing year 1970 when mirror was queued.

### SurgeFTP 2.1g 9/July/2002

- fix for root directory being user home directory, reporting cannot create user home directory error

### SurgeFTP 2.1f 5/July/2002

- Changing Authent process restarts SurgeFTP rather than shutting it down.
- Status page shows OpenSSL or RSA, for encryption library
- Status page shows base Operating system basic type, ftp\_reset\_port(Windows/Linux/Solaris/FreeBSD/Mac OSX
- added/fixed "no suffix for default domain" to not work, if setting not previously set.
- SSLFTP no longer prompts you to save login data, can use "save" command instead.
- SSLFTP fix for timeout not allowing another connection.
- SSLFTP fix for login details with site name. e.g. open user:pass@site

### SurgeFTP 2.1e 25/June/2002

- fix for MLSD MLST commands "File or Directory does not exist" error
- Windows installer incorrectly reports installing 2.1d

### SurgeFTP 2.1d 20/June/2002

- Redesign of Web GUI controls, much easier to navigate between configuring domains and classes.
- Planned OSX and FreeBSD builds of SurgeFTP - full SSL capabilities.
- New User Class is now set with basic alias and user type.
- Added Searchable help.
- Added windows uninstall option for control panel add/remove programs.
- User Lookup on Users page confirms if lookup succeeds.
- User page confirms if password change succeeds.
- Mirror thread is now viewable on status page.
- Mirror sets file date and time as per original file.
- Open files now viewable on status page.
- Reports now handle spaces in filepaths. old xfer.log files will still be incorrect
- Reports can scan for wildcard patterns in filenames.
- removed ability for users to specify device names com, lpt, aux, etc...
- Report Page can now select which domain to make report for
- fixed channel closing on timeout, rather than never closing (rare bug).
- fixed changing users password & adding new users.
- fixed surgeftp to make nwaith use surgeftp directory rather than dmail
- fixed bug in Linux (and Solaris?) version locking up and crashing on rare occurrence.
- fixed several typo's in web pages
- fixed "dir b\*" bug showing file not exist rather than list b\* files
- fixed restarting of monitor

### SurgeFTP 2.0s16 16/May/2002

- fixed - Correct home path is set instead of default /home/username
- Added settings for ftp port & web admin in Surgeftp.
- Added secure web admin connection, https protocol.
- fix for bug where surgeftp crashes while launching watcher executable

### SurgeFTP 2.0s13 13/May/2002

- Added open files list to status page.

### SurgeFTP 2.0s 8/May/2002

- Added Anonymous hammering detection, configure on global settings page.
- Updated Global settings page, more save buttons

- If authent process dies, Surgeftp waits for auth process to start up, and then tries authenticating again

### SurgeFTP 2.0r23 23/April/2002

- Surgeftp now has setting to disable client certificate requirement (global)
- sslftp fix for mput locking up
- sslftp can set preferred protocol by commandline -tlsv1 -sslv2 -sslv3
- sslftp can set preferred protocol by "protocol n" from prompt.
- sslftp indicates secure protocol in use on connection.
- watcher program download is spawned after file is closed.

### SurgeFTP 2.0r17 17/April/2002

- class name is shown in class list and class properties (it was not displaying it after saving)
- Adding a user to database through the gui now automatically sets domain prefix or domain suffix.
- fix for ssl not accepting on data channel
- mgets works properly with \* wildcard.

### SurgeFTP 2.0r 2/April/2002

- fix for surgeftp lockup (100%cpu use & not responding) at least one instance of problem, seems to be last one
- fix bug that could crash surgeftp on viewing status page.
- fixed bug that made some SSL connection not close
- sslftp allows logon details as part of site name e.g. "user:pass@site"

### SurgeFTP 2.0q 18/March/2002

- fix multiple spawnings of surgeftp / auth process
- fix direcorey list of real file paths
- fix thread handle leak (not sure if bug is in any realease versions)
- fix directory case sensitivity on NT
- fix for users ending up in wrong directory (bad auth module responses)
- can change logging level without restarting
- can change log home without restarting
- fixed bug, partial command loss (introduced in 2.0m13)
- added surgeftp.log daily roll setting.
- redone status page, shows list of active connections.
- can change thread reuse without restarting
- added status page monitoring of threads in use
- removed memory leak parameter arg in thread accounting wasn't being freed.
- xfer.log files are now flushing with the global\_log\_flushng setting.
- surgeftp decreased response time to accepting ftp connections, noticeable for sites with lots of Domains.
- removed real directory info from "file not exist message" and similar
- fixed some bad linux install problems, wrong paths etc...
- some minor tweaks to performance
- some minor bug fixes

### SurgeFTP 2.0i 4/December/2001

- Added support for hashing directories of users name. e.g. c:\home\bo\bob
- changed the Global "Bind to a single IP" setting, to be a comma seperated list, can bind to many IP addresses now.
- Added "watcher" program settings for your own activity logging scripts.
- Authent Domain flag changing by web gui is now set at runtime, it does not require a restart of the server.
- made reading, and not showing lists, into seperate settings (permissions on aliases), they were both keyed on the "read" permission.
- Support for "user quota" and "IP to connect from" responses from external authentication module. "ftpquota" and "ftpfromip" variable flags.
- You can now have the domain based logs put in an alternative location - global setting.
- Added setting to disable wildcard multi-directory listings on commands like "ls n\*".
- fixed bug that made lots of surgeftp.exe processes on windows
- fixed bug "cd ~" not working under certain circumstances



- fixed bug reporting incorrect IP address in response string from a PASV command.
- fixed bug, caching of "authentication processes startup failure" as "bad login"
- fixed bug trailing slashes on aliased directories make SurgeFTP go boom, e.g. c:\
- fixed bug loosing or corrupting settings for medium-length path or alias strings.
- sslftp (client) can now abort transfers with ctrl-C
- sslftp added command line setting "sslftp -version" which reports what version it is.
- sslftp no longer uses the system call to get\_pass on all platforms, so that you can script passwords.

### **SurgeFTP 2.0i 10/August/2001**

- Fixed some security issues with admin page
- Added global\_adminip setting to restrict admin users to certain ip addresses.
- Many fixes/features added to sslftp

### **SurgeFTP 2.0g 17/July/2001**

- Added to sslftp/client, hash command, and CTRL-C abort during transfer.
- Fixed crash with mirroring anything on Solaris.

### **SurgeFTP 2.0f 10/July/2001**

- Fixed sslftp/client problem with directory listings being truncated.
- Fixed fault with more than 2 virtual domains

### **SurgeFTP 2.0e**

- Fixed default behavior, if 'noretrieve' is blank it will now allow files to be fetched.

### **SurgeFTP 2.0d**

- Change client name from 'sftp' to 'sslftp' to avoid conflicts on unix platforms.
- Fixed mode for directories created by mirror(s) on unix
- Fixed mget,mput behavior when 'a' is pressed. (it used to skip a file)

### **SurgeFTP 2.0c**

- Fixed path separators on Windows so network shares work correctly.
- Fixed noretrieve with wild cards etc.

### **SurgeFTP 2.0b**

- Fixed faults reported with Windows 95/98 file behavior

### **SurgeFTP 2.0a**

- First release including support for SSL/TLS encryption, not yet in all builds, see ssl.htm for more information.

### **SurgeFTP 1.1k**

- Fixed fault in mirroring code.

### **SurgeFTP 1.1j**

- Fixed problem with quota limits applying when not defined.

### SurgeFTP 1.1h

- Fixed bug which could cause crashes

### SurgeFTP 1.1g

- Fixed bugs in extern authent module processing.
- Added 'ftpquota' to valid authent responses and a quota setting to calasses, this implements a virtual quota based on space used in the user's home directory.
- Example of response from authentication module.
- +ok username config 0 ftpquota=100 ftphome="d:\home\bob"

### SurgeFTP 1.1e 6-Feb-2001

- Now accepts username 'ftp' as synonym for 'anonymous'
- Authent modules can now return ftpgid, ftpuid, ftphome, note that ftphome is only used if the class 'home' is not defined.

### SurgeFTP 1.1c 30-Dec-2000

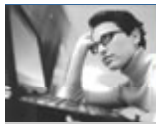
- Added new features to class template
- Made longest alias apply rather than 'last' alias.
- Fixed bug with virtual domain support.
- SuregFTP 1.1b 29-Dec-2000
- Made the user 'ftp' a synonym for 'anonymous' and corrected the response text for anonymous logins.
- Added \$username as a valid variable to use in aliases, it is replaced by the users username. e.g. /home/\$username
- Added virtual domain support for users logging in with user@domain.name as their address, SurgeFTP will search its list of domains and if it finds 'domain.name' it will pretend the user connected to that virtual domain.

### SurgeFTP 1.1a 15-Dec-2000

- Added support for -lR listing options to NLST and LIST ftp commands.
- Fixed rare intermittent crash when processing MLST ftp command.
- Added directory browsing and deletion access settings.

### SurgeFTP 1.0d 1-Dec-2000

- First release build



Search Manual

# SurgeFTP ftp server - Brilliant, SSL, secure, standards compliant, Windows FTP Server, Linux FTP server, and most other platforms.

## SurgeFTP Links

- [Download](#)
- [Purchase](#)
- [Prices](#)
- [Pre Sales Support](#)
- [F.A.Q.](#)
- [Manual](#)
- [Performance/Threads](#)
- [Easy Management](#)
- [Unlimited Virtual Domains](#)
- [Version History](#)



**SurgeFTP ftp server** - provides industrial strength secure SSL / TLS encryption, powerful FTP server performance, full and complete reporting tools and most importantly, ease of management. This advanced FTP Server features full SSL/TLS security for Windows, Linux, FreeBSD, Solaris and Mac OSX. With a few clicks you can generate a report to show who's using your server, and more importantly who is misusing it, wasting your bandwidth and resources. In addition, SurgeFTP ftp server offers statistics on connections as well as robust logging capabilities and is fully compliant to all standard FTP protocols, RFC 2389, RFC 959, RFC 2428

[Download now](#) for a 30 day free trial

## SurgeFTP ftp server - Key Features

- [Free SSLFTP command line client for windows, linux, solaris with full SSL security.](#)
- **Administration**
  - Remote web based administration
  - Emailed activity reports (uploads/downloads)
  - Status Page, see number of connections, uptime, current transfers
  - Extensive online help (inside SurgeFTP Admin)
- **Accounts and Groups**
  - Multiple User Classes per Domain (different rules for different users)
  - Individual User Limitations by Authentication Module or User Class
  - User Group Settings
  - Automatic Home directory creation for new Users
  - Access rights for shared user resource directories (i.e. read only common directories)
  - .message notification compatibility
  - Quota system for users home directories
  - native or self contained user database (NT or UNIX passwd ) support
- **Security**
  - SSL/TLS availability for encryption of FTP sessions. Uses OpenSSL
  - Server Administration through HTTPS or (HTTP) with any web browser
  - Settings to allow use through NAT/Firewall/Router
- **Traffic Control**
  - Anti Anonymous Hammering (auto IP banning)
  - Limit connections by domain or user name or user class
  - Limit number of concurrent connections
  - Limit Download rates (Kb/sec) per User Class
  - Internal Authentication Module Cache of 10mins (prevent your DB being hammered)
- **Authentication**
  - User Authentication by system or external module
  - Existing Authentication Modules for LDAP, SQL, ODBC, Radius, nauth.
  - Each domain can have a separate Authentication Module
  - System Authentication on Windows is compatible with Active Directory
  - Unix compatibility for system authentication, use users home directory
- **Other**
  - RFC Compliance to standard RFC's for FTP protocol
    - RFC 2389, RFC 959, RFC 2428
    - draft-ietf-ftpext-mlst-12 and draft-murray-auth-ftp-ssl-06
  - Multiple Domains
  - Built in multiple mirror / replication functionality
  - Pre Sales Support [surgeftp-support@netwinsite.com](mailto:surgeftp-support@netwinsite.com)

## Pre and Post sales service

**We pride ourselves on giving our customers unparalleled service, if you have questions, problems, or even need a feature added in a hurry we will bend over backwards to satisfy your needs, have you had a better offer recently?**

**Satisfaction Guaranteed!** Are you sick of buying software and then finding it doesn't do what you want, or doesn't even work! We stand behind our software, if you are not satisfied with the product, performance or customer support we will refund 100% of your purchase price.

**We want to make you as happy about your SurgeFTP server as this customer:**

"ALL the programmers, support people, accounting people, well the entire company is OUTSTANDING - If you are or were a US Marine you will know what that means ! I have NEVER had the responsiveness that Net Win provides ! The technical support is the best I have ever worked with. They do NOT give up, they help you all the way ! Even before the purchase ! From this stand point alone, everyone who operates an ISP and provides custom FTP, EMAIL, and CHAT services NEEDS these products !

**Jon Unglert - CEO - Ix Technologies, Inc & ISM Group, Inc."**

Pre Sales Support [surgeftp-support@netwinsite.com](mailto:surgeftp-support@netwinsite.com) Ask your questions now!